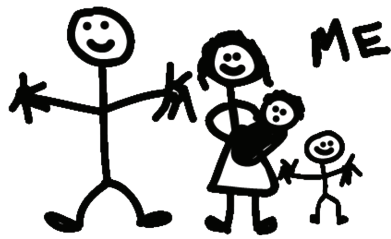


The Pathway of Early Intervention



1. Referral

- System of identifying all children (ages birth to 3) who may be eligible for Early Intervention (EI) services
- Fax (334-293-7393) or call (1-800-543-3098) referral information to Child Find, which is answered by staff from ADRS as the lead agency for early intervention
- Family contacted by Early Intervention service coordinator

2. Service Coordination

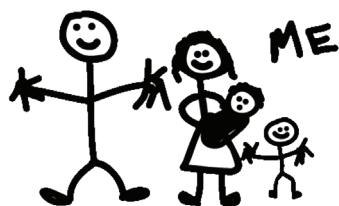
- Every family involved in EI is assigned a service coordinator (SC)
- The SC assists and enables a child with a disability and family to receive services and rights required under Early Intervention
- The SC coordinates evaluations/assessments and all services required under Early Intervention

3. Child and Parents Rights

- Procedures to ensure the rights of each eligible child and family
- Provides protection for family and service providers throughout the family's involvement in Early Intervention
- The service coordinator is responsible for informing families of their rights
- Parents will be provided documents and forms as part of the process to protect confidentiality, release of information, consent to change services, etc.

4. Evaluation/Assessment

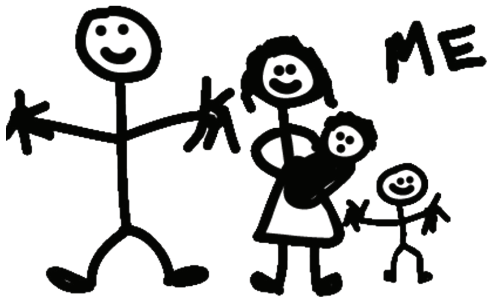
- Process to determine if the child meets Alabama's eligibility criteria
- Parents must give written consent
- The child's functioning abilities in the five developmental areas (communication, social or emotional, physical to include vision/hearing, cognitive and adaptive) are reviewed
- Process is completed within 45 calendar days of referral
- If the child is eligible, then parents are offered a Voluntary Family Assessment



Alabama's **Early Intervention** System
Families are the foundation of our system.

5. Individualized Family Service Plan (IFSP)

- If a child meets Alabama's eligibility criteria based on the evaluation, then a plan of services is written
- Parents are part of the team that writes the plan of services, or IFSP
- The IFSP team determines the services needed to meet the functional, developmentally appropriate outcomes
- Early intervention services will be provided in the natural environment; such as the home, child care setting, etc.
- Parents must provide written consent for the services to be provided

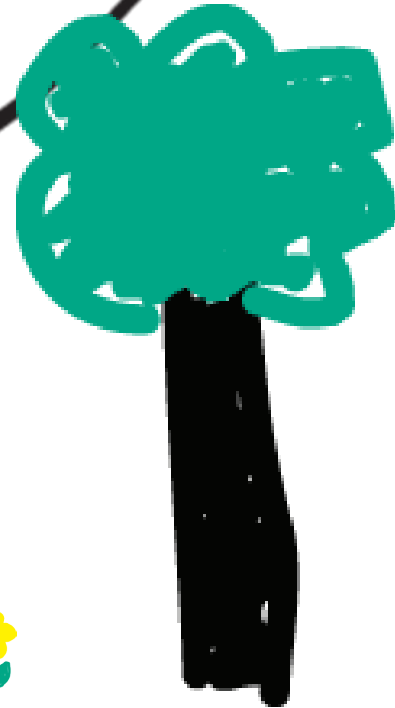
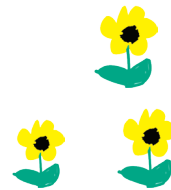


Early intervention services

- Assistive technology device and service
- Audiology
- Family training, counseling and home visits
- Health services
- Medical services
- Nursing services
- Nutrition
- Occupational therapy (OT)
- Physical therapy (PT)
- Psychological services
- Service coordination
- Sign language and cued language services
- Social work services
- Special instruction
- Speech-language pathology (SLP) services
- Transportation and related costs
- Vision services

6. Transition

- Process of moving from services under Early Intervention to preschool (local education agency [LEA]) or other services
- The IFSP will be revised to include a written transition plan
- The process begins when the child is 27 months old and concludes on the child's third birthday
- Families will work with EI and preschool staff or other community organizations to make the change in the child's service delivery by the time the child is 3



The Alabama Department of Rehabilitation Services (ADRS) has been designated by the governor as the lead agency for early intervention as defined by Part C of the Individuals with Disabilities Education Act (IDEA). The division of Early Intervention under ADRS has been charged with the responsibility of assuring all programs participating in Alabama's Early Intervention System (AEIS) comply with all state and federal rules and regulations.

For more information, contact:

Alabama's Early Intervention System
602 S. Lawrence St.
Montgomery, AL 36104
1-800-543-3098
(TTY) 1-800-499-1816
Fax: 334-293-7393
www.rehab.alabama.gov/ei

